

SPICER®



AXIP-1000-32021
March 2021

Illustrated Parts List

Supersedes AXIP-1000
Released August 2018

Commercial Vehicles **Spicer® Drive Axles** **Navistar Vista**

S23-172, S23-172D

IDENTIFY



LOCATE



ORDER



TRACK



SIMPLIFIED.



DanaAftermarket.com

It's never been easier to do business with Dana.

You've spoken. We've listened. Easily access the genuine Spicer Electrified parts information you need to succeed. Search by part number, product type, product line, keywords, and year-make-model. Place and track your orders. It's all here to help streamline your operations and grow your business. Experience the new one-stop solution from Spicer today!

©Dana Limited, 2017. All rights reserved. Dana Limited, Spicer® is a registered trademark of Dana Limited.

General Information.....	2
How to Use Illustrated Parts List.....	2
Model Identification.....	3
Rear Axle Parts Explode.....	5
Rear Axle Parts	6-7
Shim Table	7

How to Use Illustrated Parts List

ORDERING PARTS

- This parts book is organized in sections according to parts servicing requirements. Use the Contents or page headings to find information.
- Use this book to order parts for your Dana Spicer® Axle.
- For convenience, part numbers have been included for all pieces of the carrier assembly. Some of these parts, such as the carrier and caps, are serviced only in kits or assemblies. Part numbers are for your reference only. Those parts not serviced separately are identified with NSS.

KITS AND ASSEMBLIES

- Kits and Assemblies contain groups of individual or assembled parts developed for optimal replacement or repair of a service problem.
- Kits and Assemblies are shown with applicable parts groupings in the parts listing.
- See the Appendix for detailed information concerning kits applicable to this model.

ABBREVIATIONS

- ABS - Antilock Brake System
- AR - As Required - Parts that vary in quantity with each axle. Example: shims
- Assy - Assembly
- Brg - Bearing
- Diff - Differential
- Hsg - Housing
- Inv - Involute
- N/A - Not Applicable
- NSS - Not Serviced Separately - Items which can only be purchased in sets, kit form or service assemblies. Example: brake shoes.
- RH/LH - Right Hand/Left Hand - Determined as viewed from behind the vehicle looking forward.
- RTV - Gasket Compound - Formed-in-place gasket sealer. It is recommended for use on all surfaces requiring a gasket.
- Str - Straight

ILLUSTRATIONS

- Illustrations show parts in assembly groups.
- Item numbers on illustrations correspond with parts listings on pages that accompany the drawings.
- Notes are included on illustrations where needed.

PARTS LISTINGS

- Parts listings are defined by parts groupings and are broken down by service assemblies.
- Parts Listings identify a part for servicing with the following categories:
 - Item - corresponds with numbers on illustrations for part identification
 - Part Name - specifies part name or description
 - Quantity (Qty) - quantity required for assembly
 - Current Part - service part numbers are broken down by model, type or other applicable information
 - Notes - define unique characteristics or replacement notes
 - Kits / Assy Where Used - indicates Kits or Assemblies that contain a particular part
- Other pertinent information is listed in tables or parts listings as required

Effectively Using a Parts Listing - Example

FOLLOW THE EXAMPLE BELOW TO LOCATE AND ORDER EXACTLY WHAT IS REQUIRED FOR SERVICING.

Match to items on illustration	Use to identify Part #	Order this quantity for servicing	Order part # by model indicated		Indicates information important to ordering or use
Item	Description	Qty	DSP40(P)	DDP40(P)	Notes
7	Brg Cup - Plain Half	1	134301•	15092•	134301 replaces 129566
8	Brg Cone - Plain Half	1	134300•	128604•	134300 replaces 129565

SUMMARY OF KITS AND ASSEMBLIES

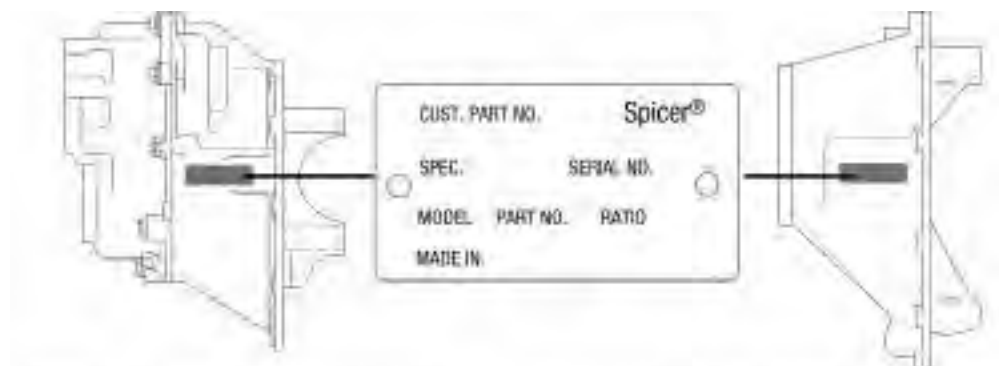
Oil Seal & Shim Kit	216224	216224	Includes 49-54 & 127592
Basic Overhaul Kit	510393	510393	Contents Identified with *

Model Identification

LOCATING MODEL DESIGNATION INFORMATION

- Axle Model Identification, Part Number and Serial Number are located on a tag at the axle centerline. This information will help to locate information in this book and to identify the correct parts for servicing.

DRIVE AXLES



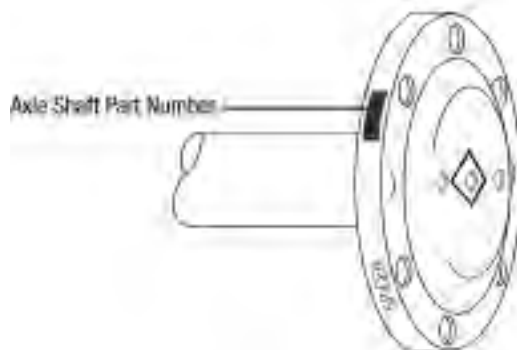
* Model Number, Part Number and Serial Number are located on the data plate on the axle centerline

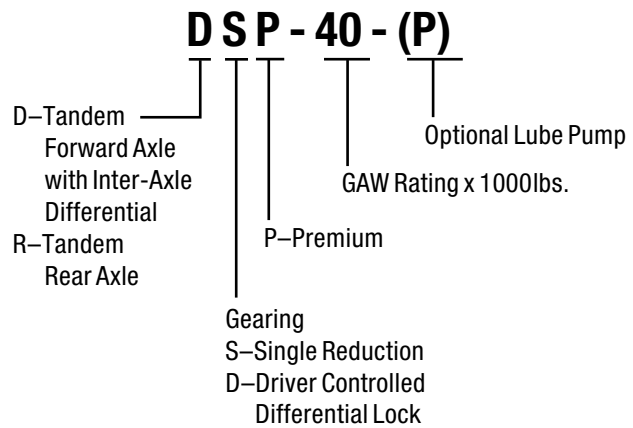
DRIVE AXLE ASSEMBLY TAG

1. Country or origin
2. Axle model identification
3. Specification number assigned to the axle built by Spicer®. Identifies all component parts of the axle including special OEM requirements such as yokes or flanges
4. OEM part number assigned to the axle build
5. Carrier assembly serial number assigned by the manufacturing plant
6. Axle gear ratio
7. Carrier assembly production or service part number

NOTE: When inquiring about specific information on your axle, write down all of the above information from your tag and call your local OEM dealer or your Roadranger representative.

The axles illustrated in this book are specified with a variety of different axle shafts, according to OEM specifications. When ordering replacement axle shafts note the part number stamped into the flange.

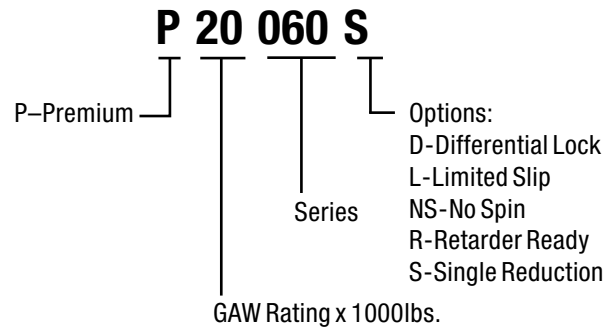




Model Identification

USING MODEL DESIGNATION TO IDENTIFY AXLE COMPONENTS

- The Axle Model Identification number contains information that is important to understand when purchasing service parts or new components. The Model Identification number provides important vehicle capacity and application information and model features. Use this guideline to understand your Axle Model Identification. If you need assistance contact your Roadranger representative.



Models

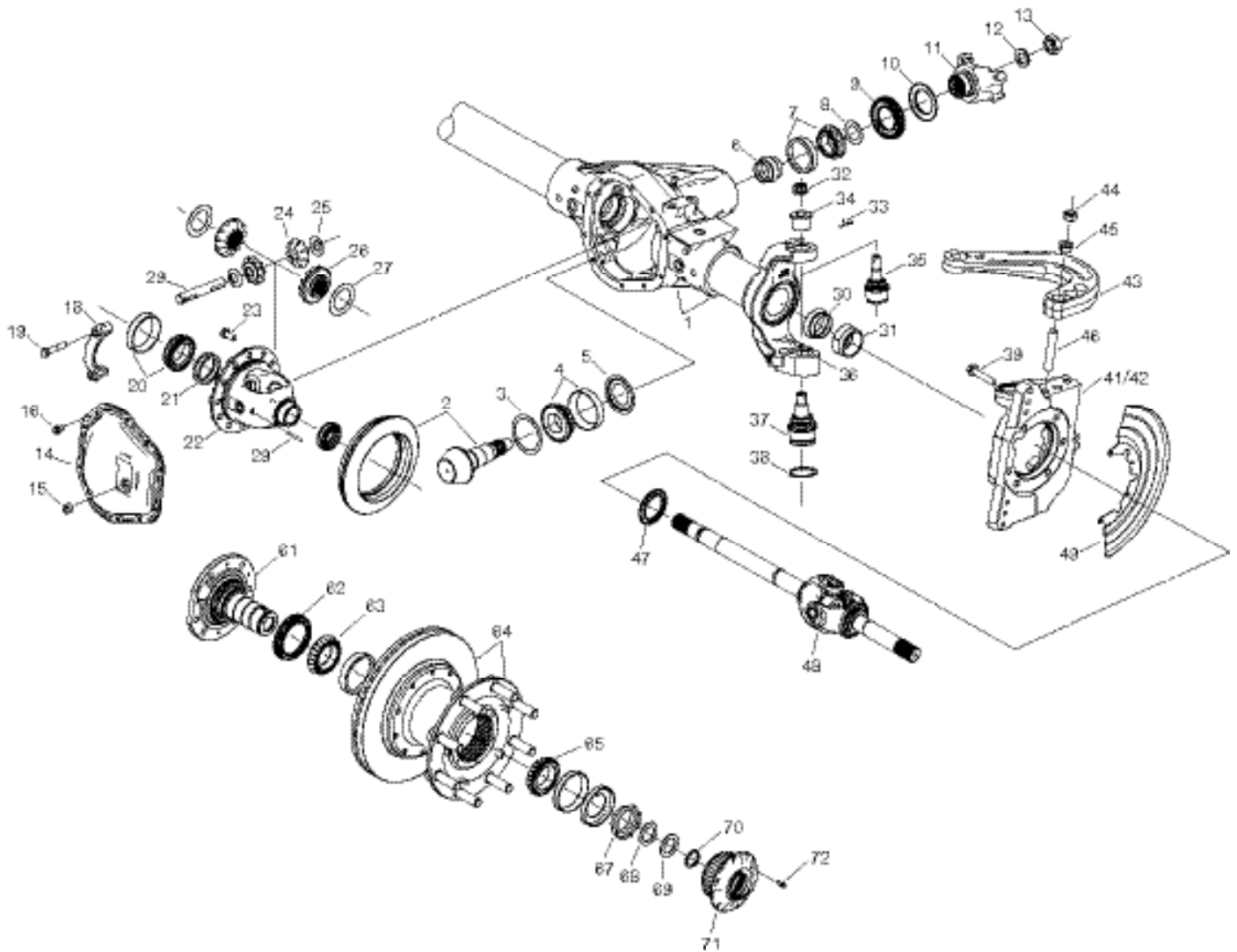
The following models are included in this publication:

SINGLE REDUCTION MODELS

Rear Axle	Axle Capacity	Gear Size
S23-172	23,000 Lbs	17.3" Hypoid Gear

SINGLE REDUCTION MODELS WITH WHEEL DIFFERENTIAL LOCK

Rear Axle	Axle Capacity	Gear Size
S23-172D	23,000 Lbs	17.3" Hypoid Gear



Item	Part #	Description
CARRIER SUB ASSEMBLY	10055852	Includes 1, 18, 19
1	10038670	Carrier
2	2020689	Ring and Pinion Gearset
3	2007452 (5)	Pinion Bearing Shim
4	566243	Bearing Cone
4	566244	Bearing Cup
5	2021009	Pinion Oil Baffle
6	2023188	Collapsible Space
7	566235	Bearing Cone
7	566248	Bearing Cup
8	2007794	Thrustwasher
9	10081578	Pinion Oil Seal
10	2021025	Deflector
11	10045492	End Yoke Assembly
12	2007409	Flat Washer
13	2007408	Pinion Nut
14	10066550	Differential Cover
15	43180	Fill Plug
16	47508-2	Differential Cover Bolt Qty (10)
17	38615	RTV
18	53152	Bearing Cap Bolt
19	48632-2	Bearing Cap Bolt
20	550362	Bearing Cone
20	550363	Bearing Cup
21	30276 (5)	Shim
DIFFERENTIAL CASE ASSEMBLY	10010271	Includes 22, 24-29
22	30357	Differential Case
23	40638	Differential Ring Gear Bolts Qty (12)
24	10014127	Differential Pinion Mate Gear
25	54630	Thrustwasher
26	10014126	Differential Side Gear
27	34729	Thrustwasher
28	30263	Differential Shaft
29	44810	Roll Pin
30	10050942	Oil Seal
31	2017652	Guide
32	44101	Slotted Nut
33	500024-8	Cotter Pin
34	54817	Bushing
35	2019191	Upper Socket Assembly
36	44133	lock nut
37	2019108	Lower Socket Assembly
38	54091	Snap Rign
39	54400-1	Spindle Mounting Bolt
41	10037179	Right Steering Knuckle
42	10037180	Left Steering Knuckle
RIGHT KNUCKLE ASSEMBLY	10037203	Includes 35, 37, 41
LEFT KNUCKLE ASSEMBLY	10037207	Includes 35, 37, 42
43	10038799	Steering Arm
44	46992	Lock Nut
45	54278	Adapter
46	55522-1	STUD
47	50381	Seal
48	10038581	Shaft and Joint Assembly - Right
48	10038555	Shaft and Joint Assembly - Left
49	10051141	Brake Dust Sheild
RIGHT SPINDLE ASSEMBLY	10101501	Includes 61, 62, 63
LEFT SPINDLE ASSEMBLY	10101502	Includes 61, 62, 63
61	10100742	Spindle - Right
61	10100747	Spindle - Left

Item	Part #	Description
HUB AND ROTOR ASSEMBLY	10050970	
62	2016579-1	Hub Seal
63	2016555-1	Bearing Cone - Inner
64	(2)	Hub and Rotor
65	550348	Bearing Cone - Outer
67	47858	Wheel bearing retainer
68	54204	Thrust Washer
69	54205	Thrust Washer
70	54197	Snap Ring
71	10157626	Hub Lock Assembly
72	53978-2	Hub Lock Bolt
not shown	10050969	Sensor Assembly
not shown	10043886	Sensor Bracket
not shown	976657	Bushing
not shown	54331	ABS bracket Bolts
not shown	2017657	TIE ROD ASSEMBLY
not shown	10168924	RH Calliper Assembly
not shown	10168925	LH Calliper Assembly
not shown	10050245	Calliper Bolt
not shown	10050246	Calliper Bolt Washer
Footnotes		
2 - Contact OEM		
5 - see shim table		

Shim Table

Part #	Thickness (mm)
30276-1	0.08
30276-2	0.13
30276-3	0.25
30276-4	0.76

Part #	Thickness (mm)
2007452-105	1.050
2007452-108	1.075
2007452-110	1.100
2007452-113	1.125
2007452-115	1.150
2007452-118	1.175
2007452-120	1.200
2007452-123	1.225
2007452-125	1.250
2007452-128	1.275
2007452-130	1.300
2007452-133	1.325
2007452-135	1.350
2007452-138	1.375
2007452-140	1.400
2007452-143	1.425
2007452-145	1.450
2007452-148	1.475

[illegible]

UPGRADES THAT WON'T LET YOU DOWN.™

I need my vehicle to be as reliable as I am.

For the Lifespan of Your Vehicle, Trust Dana Aftermarket.™

At Dana, we know that your customers' vehicles are more than just a means of transport; they help support what's most important to them. So to keep your business successful, you need to carry the parts that help clients avoid unnecessary downtime. That's why Dana engineers our OE-quality driveline components and sealing solutions for high-mileage vehicles with dependable performance and quality. For more information, visit [SpicerParts.com/CV-Upgrade](https://www.SpicerParts.com/CV-Upgrade).

Aftermarket

SpicerParts.com or for our e-catalog, DanaAftermarket.com
#DanaAftermarket

© 2019 Dana Limited. All rights reserved.

A man with a beard and mustache, wearing a blue polo shirt under a bright yellow safety vest with reflective white stripes, stands in front of a vehicle. He has a name tag on his vest and a walkie-talkie clipped to his belt. The background shows parts of a vehicle and a workshop setting.

UPGRADES THAT WON'T LET YOU DOWN.TM

I need my vehicle to be as reliable as I am.

For the Lifespan of Your Vehicle, Trust Dana Aftermarket.TM

At Dana, we know that your customers' vehicles are more than just a means of transport; they help support what's most important to them. So to keep your business successful, you need to carry the parts that help clients avoid unnecessary downtime. That's why Dana engineers our OE-quality driveline components and sealing solutions for high-mileage vehicles with dependable performance and quality. For more information, visit [SpicerParts.com/CV-Upgrade](https://www.SpicerParts.com/CV-Upgrade).

A collection of Dana Spicer and Victor Reinz automotive parts, including boxes of Spicer CV joints and Victor Reinz seals, along with various mechanical components like bearings and bolts.

The DANA logo, featuring the word "DANA" in bold capital letters inside a stylized diamond shape.

Aftermarket

SpicerParts.com or for our e-catalog, DanaAftermarket.com
#DanaAftermarket

© 2019 Dana Limited. All rights reserved.

UPGRADES THAT WON'T LET YOU DOWN.TM

I need my vehicle to be as reliable as I am.

For the Lifespan of Your Vehicle, Trust Dana Aftermarket.TM

At Dana, we know that your customers' vehicles are more than just a means of transport; they help support what's most important to them. So to keep your business successful, you need to carry the parts that help clients avoid unnecessary downtime. That's why Dana engineers our OE-quality driveline components and sealing solutions for high-mileage vehicles with dependable performance and quality. For more information, visit [SpicerParts.com/CV-Upgrade](https://www.SpicerParts.com/CV-Upgrade).

Aftermarket

SpicerParts.com or for our e-catalog, DanaAftermarket.com
#DanaAftermarket

© 2019 Dana Limited. All rights reserved.

UPGRADES THAT WON'T LET YOU DOWN.TM

I need my vehicle to be as reliable as I am.

For the Lifespan of Your Vehicle, Trust Dana Aftermarket.TM

At Dana, we know that your customers' vehicles are more than just a means of transport; they help support what's most important to them. So to keep your business successful, you need to carry the parts that help clients avoid unnecessary downtime. That's why Dana engineers our OE-quality driveline components and sealing solutions for high-mileage vehicles with dependable performance and quality. For more information, visit [SpicerParts.com/CV-Upgrade](https://www.SpicerParts.com/CV-Upgrade).

Aftermarket

SpicerParts.com or for our e-catalog, DanaAftermarket.com
#DanaAftermarket

© 2019 Dana Limited. All rights reserved.



A man with a beard and mustache, wearing a blue polo shirt and a bright yellow high-visibility safety vest with reflective white stripes, stands in a workshop. He has a name tag on his vest and a walkie-talkie clipped to his belt. In the background, the front of a yellow semi-truck is visible, along with various workshop equipment and tools. The lighting is bright, highlighting the man and the truck.

UPGRADES THAT WON'T LET YOU DOWN.™

I need my vehicle to be as reliable as I am.

For the Lifespan of Your Vehicle, Trust Dana Aftermarket.™

At Dana, we know that your customers' vehicles are more than just a means of transport; they help support what's most important to them. So to keep your business successful, you need to carry the parts that help clients avoid unnecessary downtime. That's why Dana engineers our OE-quality driveline components and sealing solutions for high-mileage vehicles with dependable performance and quality. For more information, visit [SpicerParts.com/CV-Upgrade](https://www.SpicerParts.com/CV-Upgrade).

A collection of Dana Aftermarket parts is displayed on a white surface. On the left is a red and white box for a Spicer axle assembly. In the center is a blue and white box for a Victor Reinz engine component. To the right is a purple and white box for a Spicer axle assembly. Various metal parts, including bolts, nuts, and a small Spicer axle component, are scattered in front of the boxes.

The Dana logo, which consists of a blue diamond shape with the word "DANA" in white capital letters inside.

Aftermarket

SpicerParts.com or for our e-catalog, DanaAftermarket.com
#DanaAftermarket

© 2019 Dana Limited. All rights reserved.

A man with a beard and mustache, wearing a blue polo shirt and a bright yellow high-visibility safety vest with reflective white stripes, stands in a workshop. He has a name tag on his vest and a walkie-talkie clipped to his belt. In the background, the front of a yellow semi-truck is visible, along with various workshop equipment and tools. The lighting is bright, highlighting the man and the truck.

UPGRADES THAT WON'T LET YOU DOWN.™

I need my vehicle to be as reliable as I am.

For the Lifespan of Your Vehicle, Trust Dana Aftermarket.™

At Dana, we know that your customers' vehicles are more than just a means of transport; they help support what's most important to them. So to keep your business successful, you need to carry the parts that help clients avoid unnecessary downtime. That's why Dana engineers our OE-quality driveline components and sealing solutions for high-mileage vehicles with dependable performance and quality. For more information, visit [SpicerParts.com/CV-Upgrade](https://www.SpicerParts.com/CV-Upgrade).

A collection of Dana Aftermarket parts is displayed on a white surface. On the left is a red and white box for a Spicer axle assembly. In the center is a blue and white box for a Victor Reinz engine component. To the right is a purple and white box for a Spicer axle assembly. Various metal parts, including bolts, nuts, and a small Spicer axle component, are scattered in front of the boxes.

The Dana logo, which consists of a blue diamond shape with the word "DANA" in white capital letters inside.

Aftermarket

SpicerParts.com or for our e-catalog, DanaAftermarket.com
#DanaAftermarket

© 2019 Dana Limited. All rights reserved.

A man with a beard and mustache, wearing a blue polo shirt and a bright yellow high-visibility safety vest with reflective white stripes, stands in a workshop. He is leaning his right arm on a yellow vehicle component. A name tag is pinned to his vest, and a walkie-talkie is clipped to his belt. The background is a blurred industrial setting.

UPGRADES THAT WON'T LET YOU DOWN.™

I need my vehicle to be as reliable as I am.

For the Lifespan of Your Vehicle, Trust Dana Aftermarket.™

At Dana, we know that your customers' vehicles are more than just a means of transport; they help support what's most important to them. So to keep your business successful, you need to carry the parts that help clients avoid unnecessary downtime. That's why Dana engineers our OE-quality driveline components and sealing solutions for high-mileage vehicles with dependable performance and quality. For more information, visit [SpicerParts.com/CV-Upgrade](https://www.SpicerParts.com/CV-Upgrade).

A collection of Dana Aftermarket parts, including a blue Victor Reinz box, a Spicer box, and various metal driveline components like axles and bearings.

The Dana logo, featuring the word "DANA" in white capital letters inside a blue diamond shape.

Aftermarket

SpicerParts.com or for our e-catalog, DanaAftermarket.com
#DanaAftermarket

© 2019 Dana Limited. All rights reserved.

Product Information: **SpicerParts.com** | E-Catalog and parts locator: **DanaAftermarket.com**

Dana Aftermarket Group

PO Box 1000 Maumee, Ohio 43537

Warehouse Distributors: 1.800.621.8084

OE Dealers: 1.877.777.5360

Follow SpicerParts [f](#) [t](#) [@](#) [v](#) [in](#)

© 2021 Dana Limited. All rights reserved. AXIP-1000-32021

SPICER[®]

